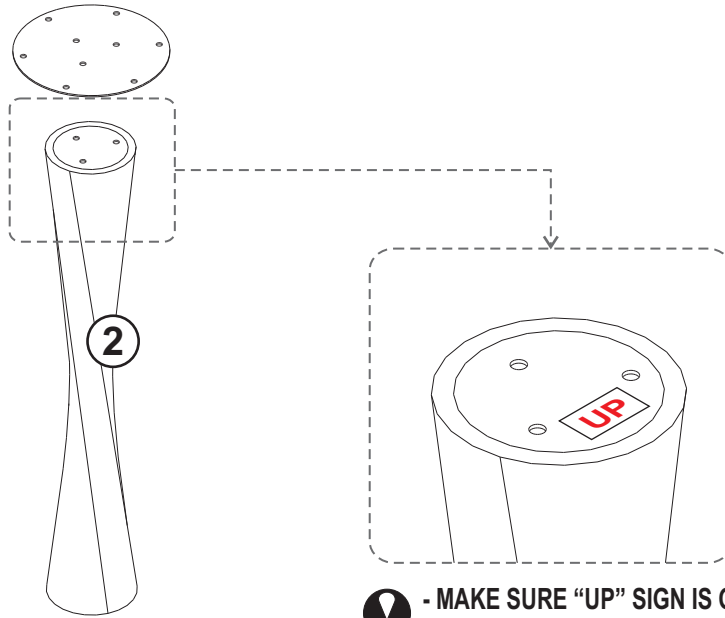


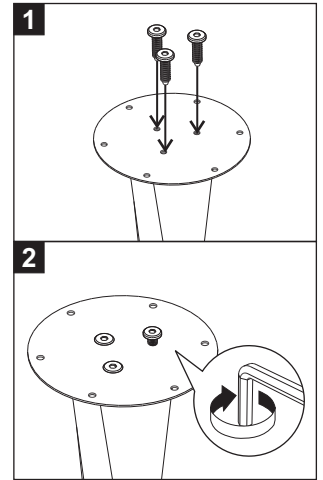


## 50015 - 50021 OAK TORSION DINING TABLE - SQUARE ASSEMBLY INSTRUCTION FOR TABLE INSTALLATION

### A INSTALLING METAL PLATE TO THE CENTER LEG

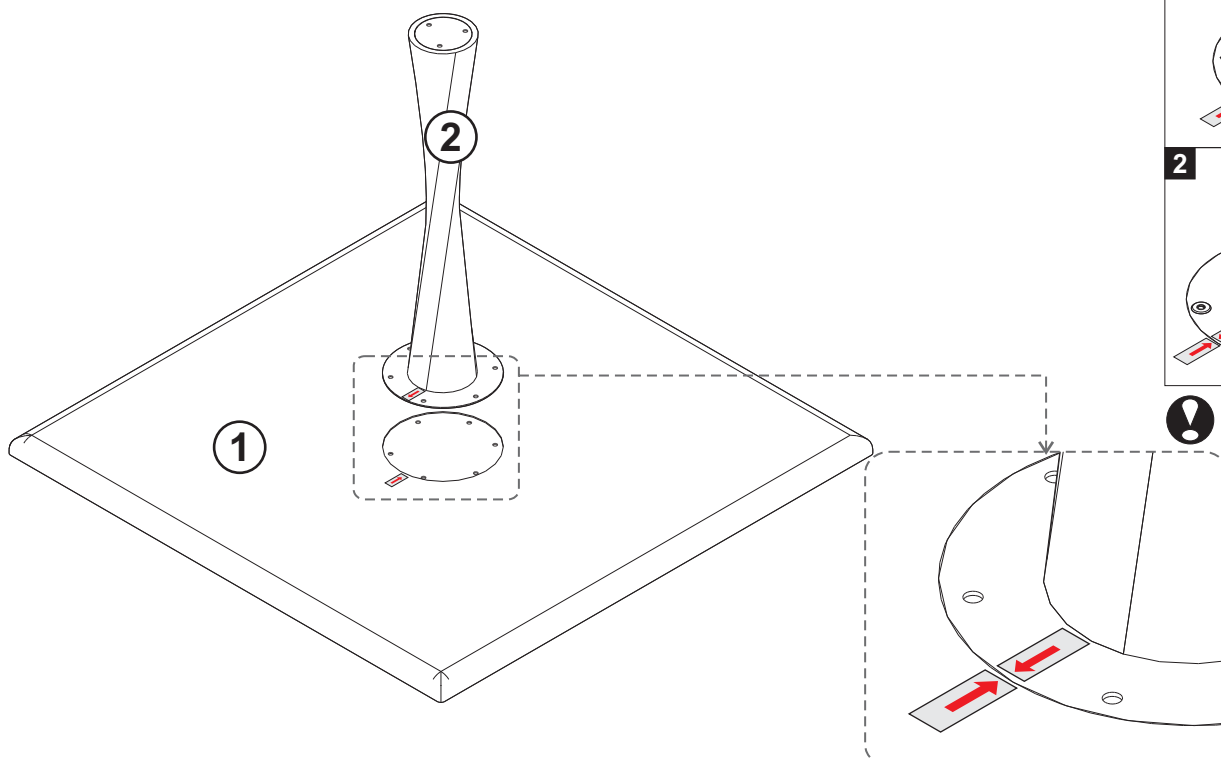


- ! - MAKE SURE "UP" SIGN IS ON TOP / ABOVE
- USE THE SCREW M8x16 (3X)

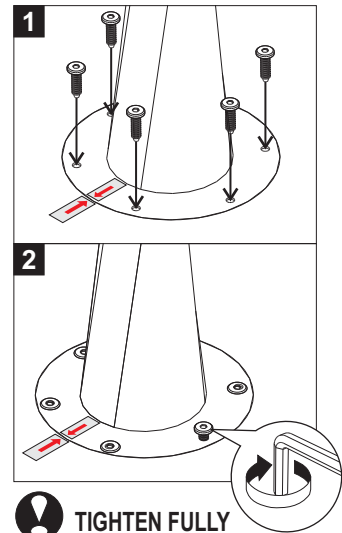


- ! TIGHTEN FULLY

### B INSTALLING CENTER LEG TO TOP TABLE



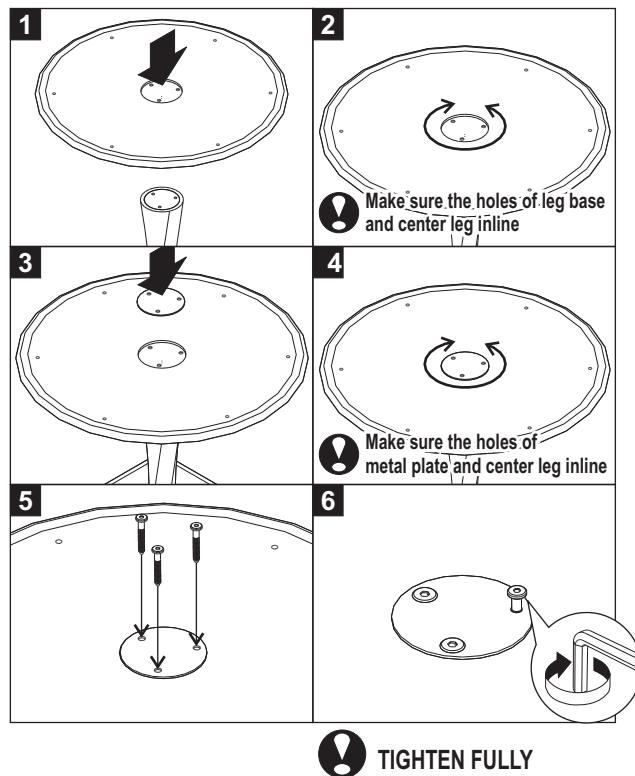
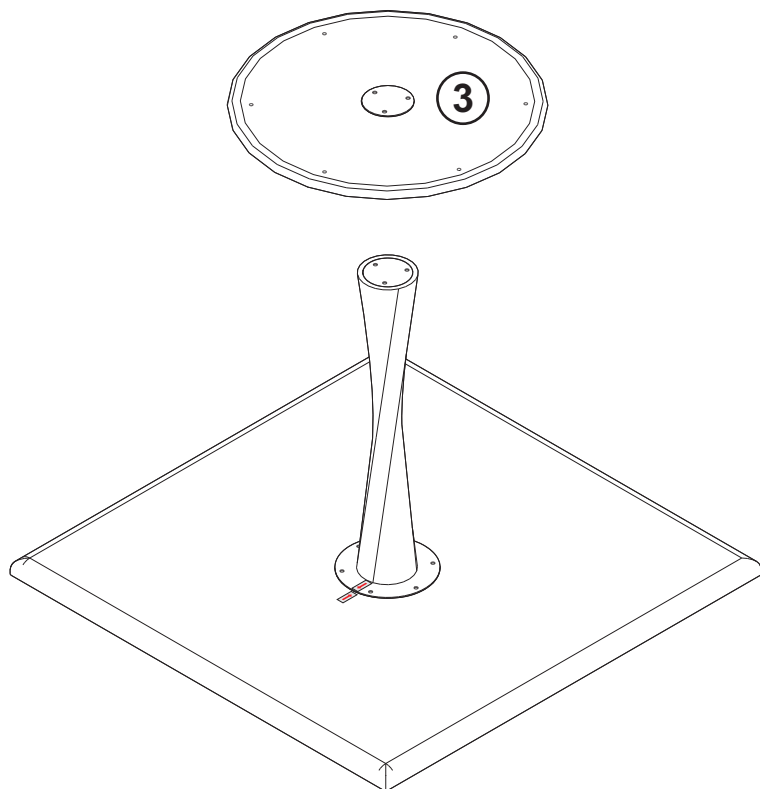
- ! - ALWAYS REFER THE STICKER
- USE THE SCREW M8x16 (6X)



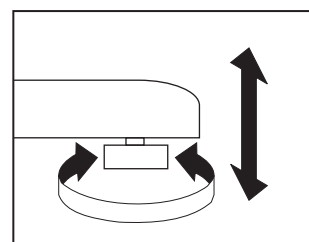
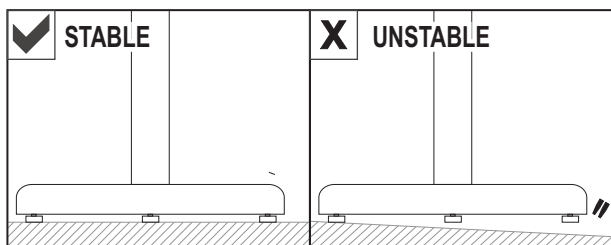
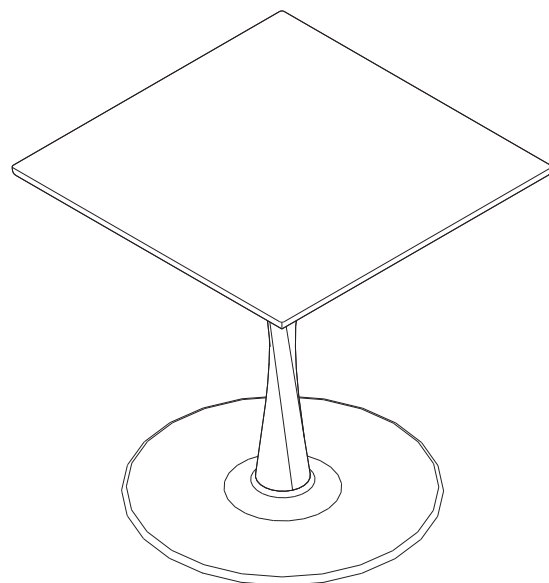
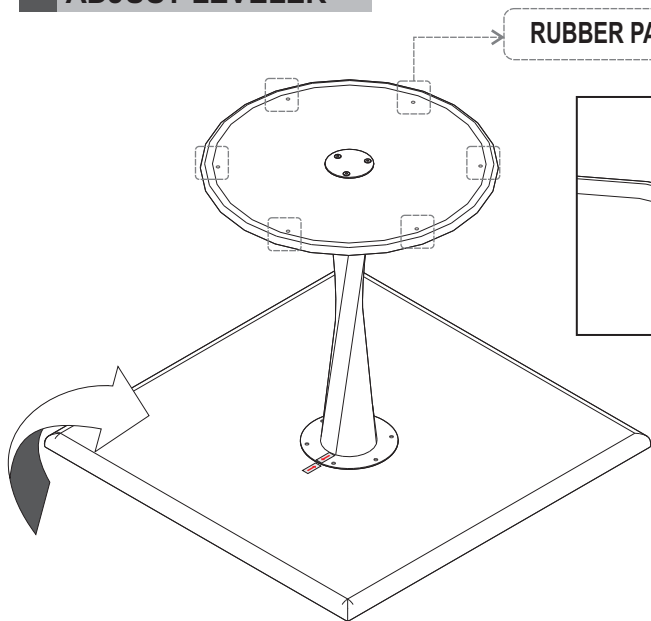
- ! TIGHTEN FULLY

## 50015 - 50021 OAK TORSION DINING TABLE - SQUARE ASSEMBLY INSTRUCTION FOR TABLE INSTALLATION

### C INSTALLING LEG BASE



### D ADJUST LEVELER



**NOTE :**  
THIS IS A COMPULSORY ACTION TO MAKE SURE  
ALL OF THE RUBBER PADS TOUCH THE GROUND!