

ELLISON STUDIOS.

Home Delivery

Guide to planning the delivery of your new furniture.

Contact Us

For more information or if you have any additional questions, please contact us at info@ellisonstudios.com or visit our website www.ellisonstudios.com

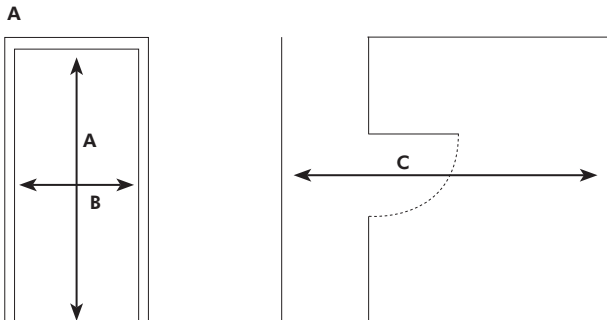
Will your furniture fit?

In the excitement of purchasing new furniture it's important to check if the pieces you've chosen will actually fit into your home. A staircase with an angle, a narrow hallway or a small elevator can present a challenge. With this tool we hope to give you some tips to help you determine in advance if an item will fit into your home.

Measuring your Space

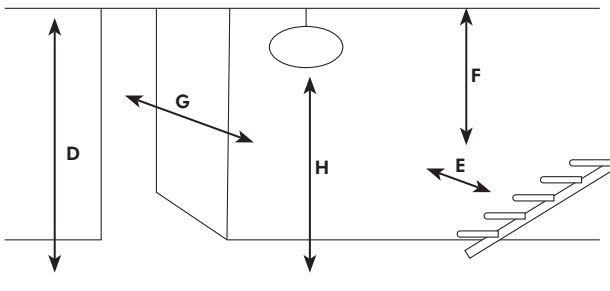
1. Measure the heights **A** and widths **B** of entryways and hallways both inside and outside your home.
2. Measure your entry clearance **C** — the distance from the wall, through the doorway to the opposite wall.
3. Factor in ceiling height **D**, stairways **E**, banisters **F**, corners **G**, and low hanging lights **H**.
4. Determine the best pathway from outside your home to the room where your new piece will be placed.

Please be sure to account for any architectural details when taking measurements.



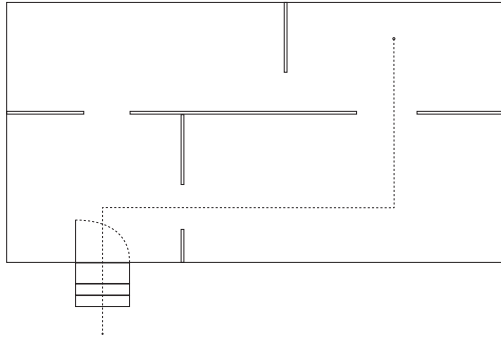
1. Entryways and Hallways

2. Entry clearance



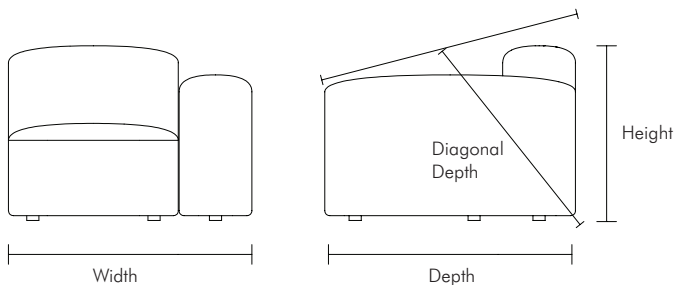
3. Factor in architectural details

3. Best delivery pathway



Know your products measurements

- We provide the width, depth and height of our furniture on the ELLISON STUDIOS. website as well as the downloadable spec sheets on each product page.
- Some of our furnishings have removable legs, feet or bases, which will help with delivery through smaller spaces. Please check the ELLISON STUDIOS. website for additional information
- In most cases ELLISON STUDIOS. products will be delivered in boxes these dimensions will be provided on each product page. In the case of some items there can be multiple boxes per item.
- Our assembled furniture measurements are calculated from each piece's widest or tallest point. This means items with an overhang, angle or outward curve are included in the overall dimensions.
- For upholstery items it is also important to consider the diagonal depth, which determines if the piece can be brought through tighter entryways at an angle.



Considerations for your delivery

- Before delivery, remove any frames or artwork from walls to avoid bumps and scratches.
- Remove any potential obstacles between the door and your furniture's final placement plants, chairs, accent tables, etc.
- Please confine pets to ensure they won't be underfoot or escape out open doors.
- If you live in a building with an elevator, measure the height of the door, as well as the inside space to ensure it's big enough for your furniture to travel in.
- Some more fragile or heavy products may come delivered in a wooden crate, this will require additional tools to remove the packaging such as a power drill, screw driver and crowbar. We will indicate which items come delivered in crates which will allow for you to obtain the tools you may need for unboxing
- Please consider the environment and recycle your packaging in the appropriate way.

ELLISON STUDIOS.