

## Care Instructions

Ensure the longevity and appearance of your ELLISON STUDIOS. timber veneered and solid timber furniture with these care instructions:

- Use a soft, damp cloth to clean surface regularly. For stubborn stains, use a mild soap solution. Avoid harsh chemicals or abrasive cleaners, as they can damage the finish.
- Use a soft cloth or duster to remove dust from surfaces regularly. This helps prevent dirt buildup, which can lead to damage overtime.
- To prevent scratching or damage, avoid placing sharp objects directly on furniture surfaces. Use coasters or mats under items that may cause damage.
- When not in use, use furniture covers if necessary and put away from harsh environmental factors to ensure the continue to last for a long time.

Following these simple steps and guidelines will help to ensure the longevity of your ELLISON STUDIOS. product.

**ELLISON STUDIOS.**

# ELLISON STUDIOS.

## Product Care & Assembly Guide

Congratulations on your purchase of your ELLISON STUDIOS. Jetson Coffee Table. This document lists the contents included in your delivery.

Please take the time to read this document, as it includes important information about caring for your product as well as any assembly instructions that might be required. As you unpack your new item, place the contents on a carpeted or padded area to protect them from damage before placing the product in its final position.

### JETSON COFFEE TABLE

#### Hardware

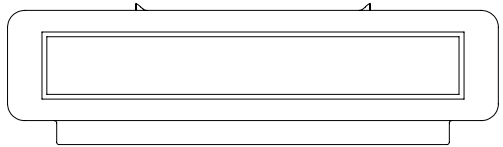
None

#### Tools Required

None

#### Assembly Guidance

2 People Minimum | Fully Assembled



#### Contact Us

For Australian warranty related queries please contact:

[customerservice@ellisonstudios.com](mailto:customerservice@ellisonstudios.com)

For any international customer service inquires please contact the retailer of purchase.

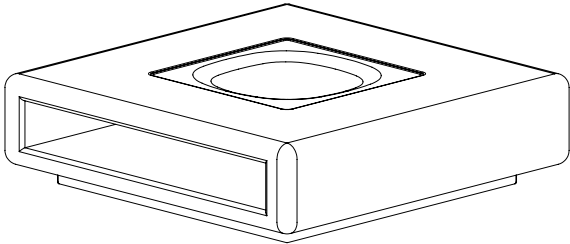
Ellison Studios Group Pty Ltd

---

# ELLISON STUDIOS.

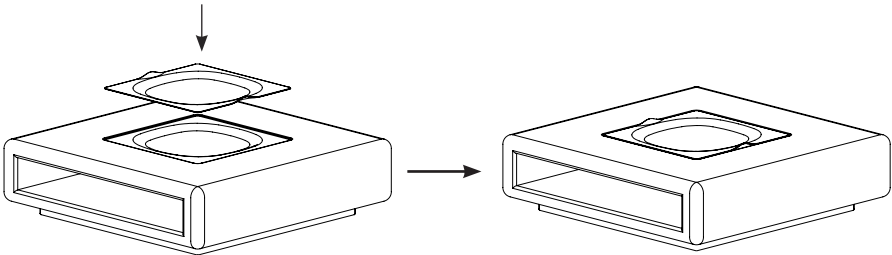
## Step 1

Position the coffee table in or near its intended final location.



## Step 2

Carefully lower the tray into position as shown. Ensure the tray sits fully flush with the surface of the tabletop.



Blank Page